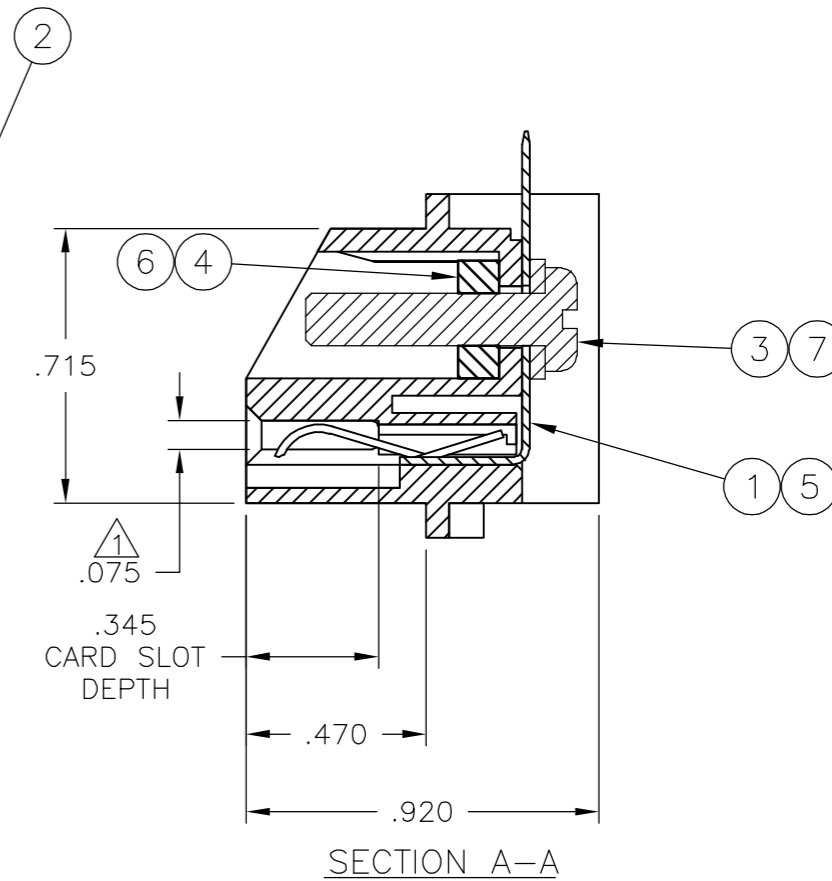
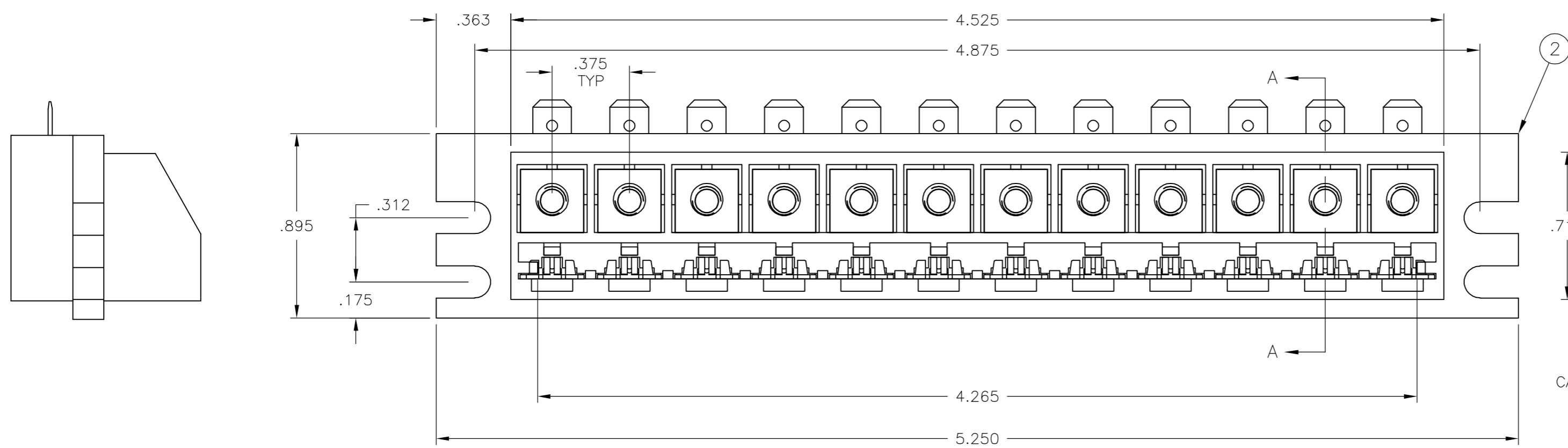
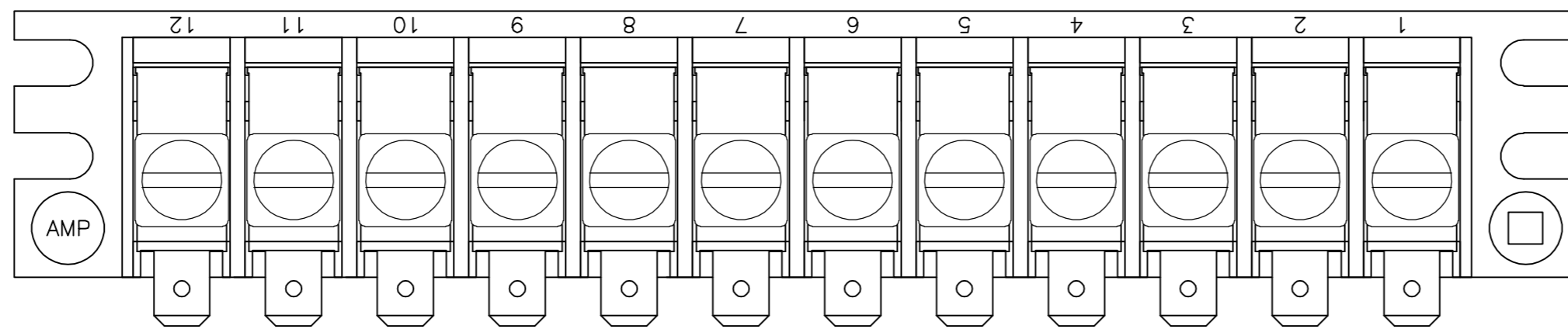


THIS DRAWING IS UNPUBLISHED. RELEASED FOR PUBLICATION
 © COPYRIGHT BY TYCO ELECTRONICS CORPORATION. ALL RIGHTS RESERVED.

LOC	DIST	REVISIONS					
FT	0	P	LTR	DESCRIPTION	DATE	DWN	APVD
		K		REVISED PER ECO-07-004106	2/21/07	SS	DC

- △ ACCEPTS .062±.007 THICK PC BOARD.
- 2. MAX ALLOWABLE BOW TO BE .003 PER INCH OF HOUSING.
- 3. 640213-1 IS ALLOWED TO USE ITEM 6 AS SUBSTITUTE FOR ITEM 4.



QTY	DESCRIPTION	MATERIAL & FINISH	ITEM NO.
12	CLAMP	STEEL, GOLD OVER NICKEL PLATED	7
12	6-32 NUT	STEEL, ZINC W/ NON-HEXAVALENT CHROMATE	6
12	CONTACT	.020 PHOS BRZ, TIN PLATE	5
-	12 6-32 NUT	STEEL, ZINC W/ HEXAVALENT CHROMATE	4
-	12 CLAMP	STEEL, ZINC PLATED	3
1	HOUSING	POLYCARBONATE, COLOR: GRAY	2
-	12 CONTACT	.020 PHOS BRZ, TIN-LEAD PLATE	1

THIS DRAWING IS A CONTROLLED DOCUMENT.

DWN	S SCHLEGEL	28MAR2006
CHK	-	-
APVD	-	-
PRODUCT SPEC	-	-
APPLICATION SPEC	-	-
WEIGHT	-	-
CUSTOMER DRAWING	SCALE 2:1	SHEET 1 of 1

tyco Electronics Tyco Electronics Corporation
Harrisburg, PA 17105-3608

NAME: EDGE CONNECTOR ASSY, MULTIPLE-TAP, 12 CIRCUIT

SIZE: A2 CAGE CODE: 00779 DRAWING NO: 640213 RESTRICTED TO: -

REV: K